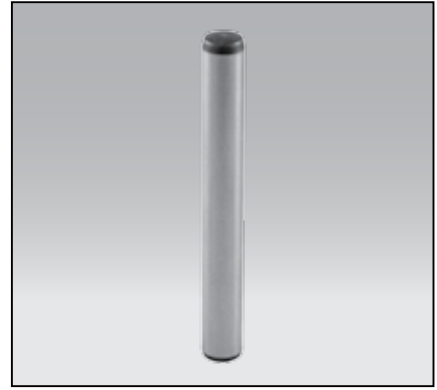
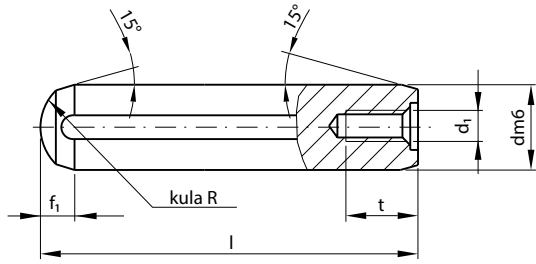


SFM

KOŁEK WALCOWY Z OTWOREM GWINTOWANYM  
DOWEL PIN WITH TAPPED HOLE



Mat.: Hartowany / Hardened 60±2 HRC

d	f <sub>1</sub>	R	d <sub>1</sub>	t	l	Nr kat. / Item no.
6	2,1	6	M4	6	16	SFM-06016
					18	SFM-06018
					20	SFM-06020
					24	SFM-06024
					28	SFM-06028
					32	SFM-06032
					36	SFM-06036
					40	SFM-06040
					45	SFM-06045
					50	SFM-06050
8	2,8	8	M5	8	20	SFM-08020
					24	SFM-08024
					28	SFM-08028
					32	SFM-08032
					36	SFM-08036
					40	SFM-08040
					45	SFM-08045
					50	SFM-08050
					55	SFM-08055
					60	SFM-08060
10	3	10	M6	10	24	SFM-10024
					28	SFM-10028
					32	SFM-10032
					36	SFM-10036
					40	SFM-10040
					45	SFM-10045
					50	SFM-10050
					55	SFM-10055
					60	SFM-10060
					70	SFM-10070
12	3,8	12	M6	10	28	SFM-12028
					32	SFM-12032
					40	SFM-12040
					45	SFM-12045
					50	SFM-12050
					55	SFM-12055
					60	SFM-12060
					70	SFM-12070
					80	SFM-12080
					90	SFM-12090
100	SFM-12100					
120	SFM-12120					

d	f <sub>1</sub>	R	d <sub>1</sub>	t	l	Nr kat. / Item no.					
14	4	14	M8	12	32	SFM-14032					
					36	SFM-14036					
					40	SFM-14040					
					45	SFM-14045					
					50	SFM-14050					
					55	SFM-14055					
					60	SFM-14060					
					70	SFM-14070					
					80	SFM-14080					
					90	SFM-14090					
					100	SFM-14100					
					120	SFM-14120					
16	4,7	16	M6	12	40	SFM-16040					
					45	SFM-16045					
					50	SFM-16050					
					55	SFM-16055					
					60	SFM-16060					
					70	SFM-16070					
					80	SFM-16080					
					90	SFM-16090					
					100	SFM-16100					
					120	SFM-16120					
					18	6	20	M10	16	40	SFM-18040
										45	SFM-18045
50	SFM-18050										
55	SFM-18055										
60	SFM-18060										
70	SFM-18070										
80	SFM-18080										
90	SFM-18090										
100	SFM-18100										
120	SFM-18120										
20	6	25	M16	24						50	SFM-20050
										60	SFM-20060
					70	SFM-20070					
					80	SFM-20080					
					90	SFM-20090					
					100	SFM-20100					
					120	SFM-20120					