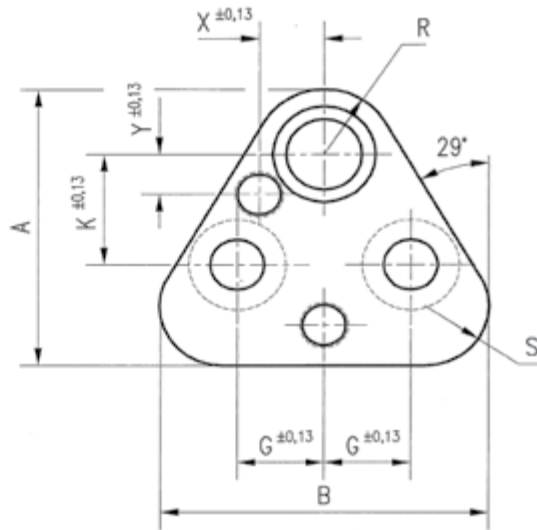
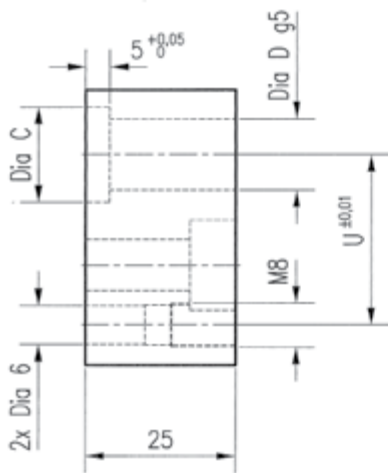
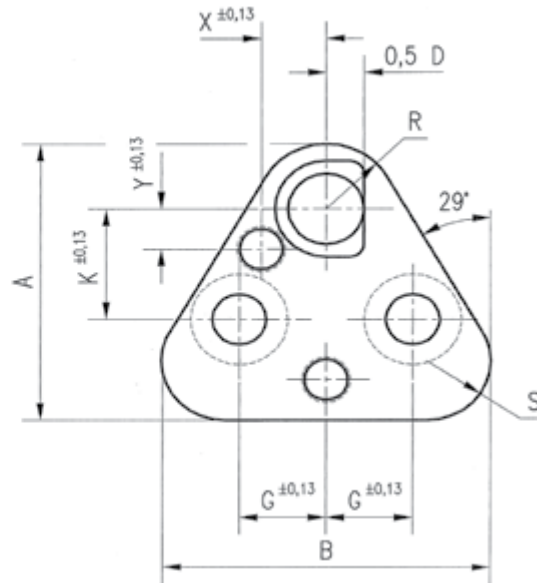
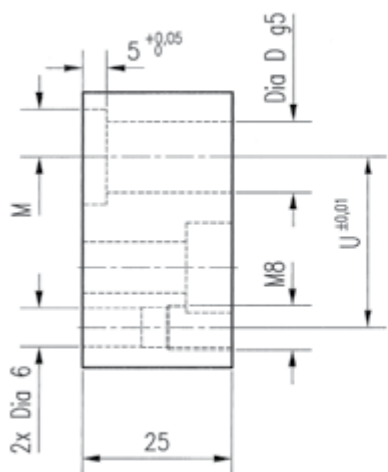


Do stempli o okrągłym kształcie cięcia.
Type art for round punches.



Do stempli o pozostałych kształtach cięcia.
Type arts for shaped punches.



Nr kat. / Item no.	No	D	A	B	ART	G	K	ARTS	R	S	U	X	Y	Śruba Screw
					H			M						
ART / ARTS	10	10,00	44,5	43,7	14,0	11,1	19,0	7,0	9,5	12,0	26,925	9,0	7,5	M8
ART / ARTS	13	13,00	50,8	50,0	17,0	14,3	19,0	8,5	12,7	15,2	29,970	12,0	6,5	M8
ART / ARTS	16	16,00	54,0	53,2	20,0	15,9	19,0	10,0	14,3	16,8	31,750	13,5	6,0	M8
ART / ARTS	20	20,00	60,3	59,5	24,0	17,5	19,0	12,0	17,5	20,0	33,530	16,5	5,0	M10
ART / ARTS	25	25,00	69,9	69,1	29,0	19,8	23,8	14,5	22,2	24,7	40,640	22,0	7,0	M12
ART / ARTS	32	32,00	69,9	69,1	36,0	19,8	23,8	18,0	22,2	24,7	40,640	22,0	7,0	M12