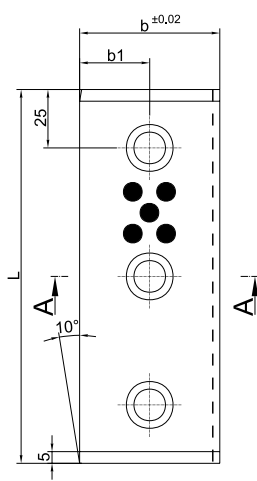
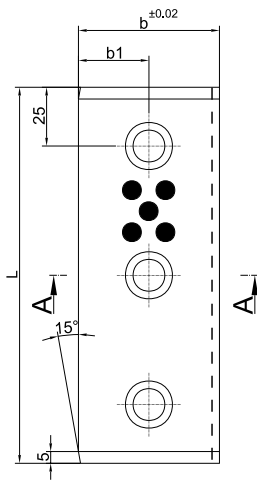
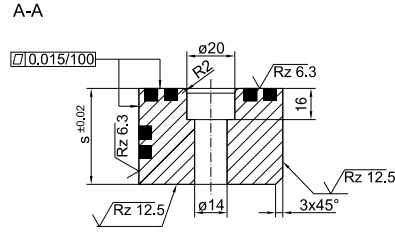
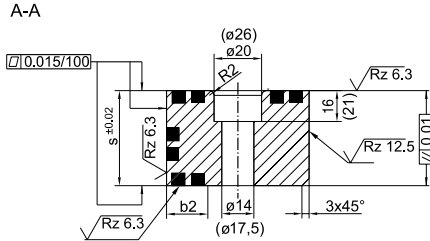
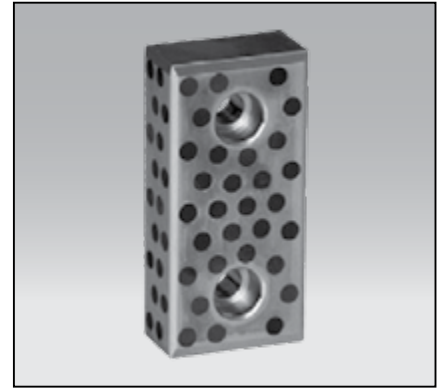


WLA

LISTWA SAMOSMARNA (2 lub 3 POWIERZCHNIE ŚLIZGOWE) MULTIPLE AREA GUIDING STRIPE (2 OR 3 SLIDING AREAS)



Mat.:
Brąz aluminiowy + grafit
Aluminium bronze + graphite

	b × L × s	b1	b2	Sposób mocowania Cheese head screw		Nr kat. / Item no.
				DIN 912	szt. / Pieces	
Wersja z 2 pow. ślizgowymi Version with 2 slide areas	60 × 125 × 30	30	-	M12	2	WLA-19658
	60 × 150 × 30					WLA-19659
	60 × 160 × 30					WLA-19713
	60 × 200 × 30				3	WLA-19660
	60 × 125 × 40					WLA-19661
	60 × 150 × 40				2	WLA-19662
	60 × 160 × 40					WLA-19714
	60 × 200 × 40				3	WLA-19663
Wersja z 3 pow. ślizgowymi Version with 3 slide areas	70 × 125 × 32	40	25	M12	2	WLA-19664
	70 × 150 × 32					WLA-19665
	70 × 200 × 32				3	WLA-19666
	90 × 125 × 45	55	30	M16	2	WLA-19667
	90 × 150 × 45					WLA-19668
	90 × 200 × 45				3	WLA-19669